

NOTES:  
 1. SEE L1.5 FOR FIRE ACCESS  
 2. SEE L1.1, L1.1.1 FOR SITE DEMO AND IMPROVEMENTS

SITE PLAN 1  
 SCALE: 1"=20'-0"

REVISION	BY
PC SHEET 1	MM
11/27/23	
PC SHEET 2	AA
11/30/23	
PC SHEET 3	AA
11/28/24	

**CITY OF EL SEGUNDO**  
 APPROVED

Approval of these plans and specifications does not constitute a warranty, express or implied, of accuracy, quality, or performance. It is the responsibility of the contractor to verify all information shown on these plans and specifications. The City of El Segundo is not responsible for any errors or omissions on these plans and specifications. One must accept full responsibility for the accuracy of all information shown on these plans and specifications.

PROJECT LOCATION: 2304 E IMPERIAL HWY  
 Project Address: 2304 E IMPERIAL HWY  
 Permit Number: 17  
 Fire Department Receipt: 165  
 Planning Department Receipt: 165  
 City Clerk: 10/11/24

**THEORY & TROP ARCHITECTS**  
 REGISTERED ARCHITECTS  
 10000 W. CENTURY BLVD. SUITE 100  
 LOS ANGELES, CALIFORNIA 90048

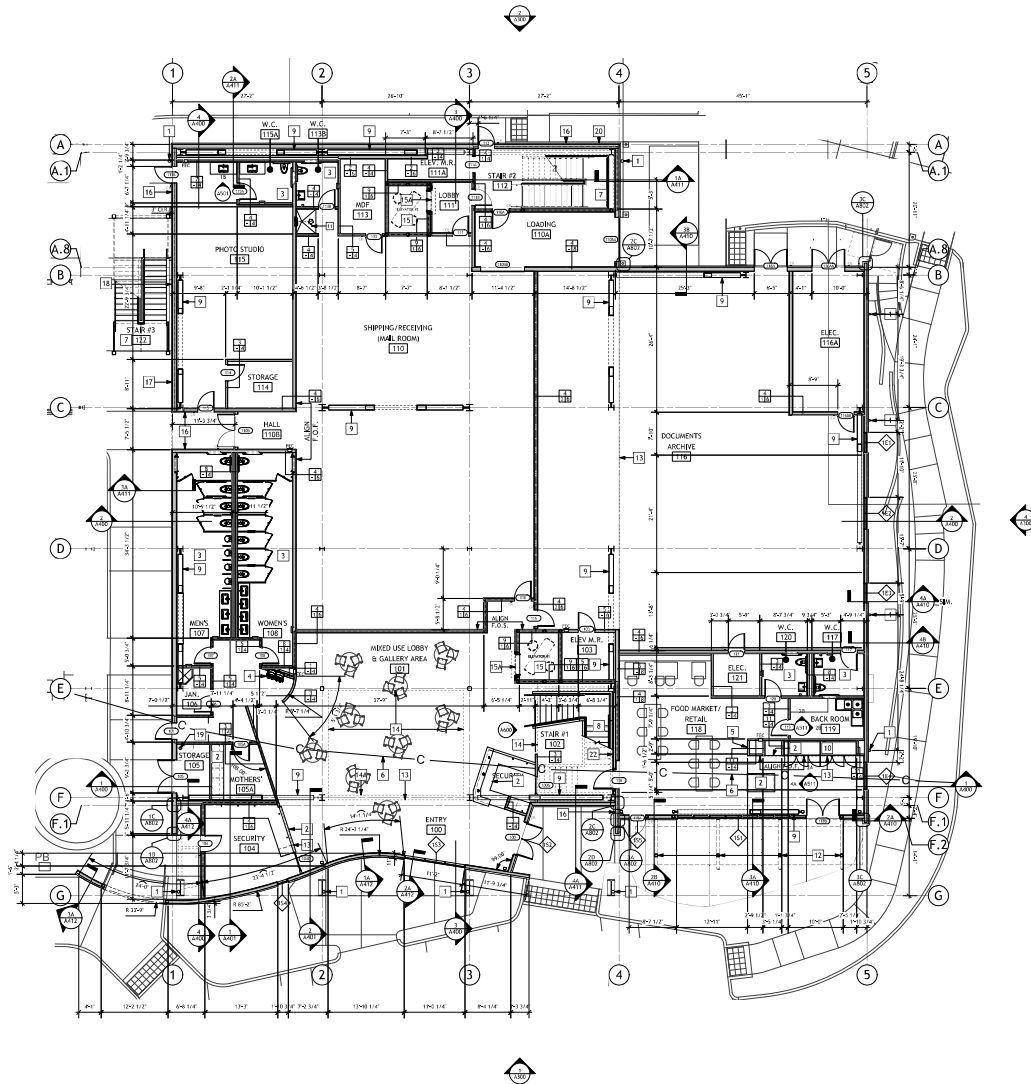
2304 East Imperial Highway  
 El Segundo, California 90245

OVERALL SITE PLAN  
 LOS ANGELES TIMES GALLERY & ARCHIVE



Date: 10/4/22  
 Scale: 1"=20'-0"  
 Drawn: AA/JJS  
 Job: 9801.0500

A100



**KEYNOTES**

- 1 DOWNSPOUT
- 2 NEW CUSTOM MILLWORK, SEE INTERIOR ELEVATIONS A510-511
- 3 NEW ACCESSIBLE RESTROOM, SEE 1A/A008 & INTERIOR ELEVATIONS A500, A501
- 4 NEW ACCESSIBLE ELKAY WATER FOUNTAIN, #LREGGENT/ELKAY, SEE 1A & 2D/A008
- 5 NEW ACCESSIBLE ELKAY IN-WALL BOTTLE FILTING STATION, #LZNSGRINBK
- 6 EXISTING UNDERGROUND COMMUNICATIONS LINE, V. I.F.
- 7 CITY STAIR # AND 3, SEE A501; BID ALTERNATE CS (CONSTRUCTION SPECIALTIES) GROUP SHIRT TIE/DIY STAIR SYSTEM AND MODULAR STAIR SYSTEM RESPECTIVELY.
- 8 MAIN ATRIUM STAIR, SEE A600
- 9 BRACE FRAME FOR STYL. GARBED RAIL TO BE PROVIDED WHERE BRACE FRAME DOES NOT EXCEED 80" CLR. A.F.F. PER CRC118-307
- 10 REFRIGERATED GLASS DOOR MERCHANDISER
- 11 EMERGENCY SAFETY SHOWER, SEE 3B/A005 & 4U/A501
- 12 TUBE STEEL TRELLIS W/ROD MODERN ENFOLD SCREEN INTERSECTING PANELS OVERHEAD, REFER TO STYL.
- 13 LINE OF SOFFIT ABOVE
- 14 LINE OF FLOOR EDGE ABOVE
- 14a EDGE OF BEAM ABOVE
- 15 NEW MEDICAL EMERGENCY SERVICE ELEVATOR SHAFT FOR MITSUBISHI PASSENGER ELEVATORS; SEE A501A FOR TYP. ACCESSIBLE DETAILS, A510 FOR ENLARGED PLANS & SECTIONS; SEE ALSO GENERAL NOTES #6-7, THIS SHEET.
- 16 EFS WALL ASSEMBLY, MIN. 1-HR RATED PER UL DESIGN V497, TYP; SEE 3C/A801
- 17 KINGSPAN PANEL WALL ASSEMBLY, MIN. 1-HR RATED PER UL DESIGN V497, TYP; SEE 3C/A801
- 18 WALL ASSEMBLY TRANSITION, MIN. 1-HR RATED PER UL DESIGN V497, TYP; SEE 3C/A802
- 19 PROPOSED LOCATION FOR FIRE SPRINKLER RISER, UNDER SEPARATE FUTURE PERMIT
- 20 PROPOSED LOCATION FOR BUILDING FIRE DEPARTMENT CONNECTION, UNDER SEPARATE FUTURE PERMIT.
- 21 NEW CONCRETE SLAB PER STRL; SUBMIT CONTROL JUNT LOCATIONS TO BE REVIEWED ALSO BY ARCHITECT PRIOR TO CONSTRUCTION, TYP.
- 22 WD. PANELED/BATTENED FLURRED WALL PER 1D/A830

**GENERAL NOTES:**

1. ALL DIMENSIONS ARE TO FACE OF STUDY, U.N.O.
2. SEE DOOR SCHEDULE, A100.
3. SEE INTERIOR PARTITION TYPES, A101.
4. ALL 1 1/2" FRAMED EXTERIOR WALLS RECEIVE (2) LAYERS OF GYP. BD. AT INTERIOR SIDE, TYP. PER PLAN.
5. SEE WINDOW SCHEDULE, A102.
6. ELEVATORS SHALL BE PROVIDED WITH PHASE I EMERGENCY RECALL OPERATION AND PHASE II EMERGENCY IN-CAR OPERATION IN ACCORDANCE WITH CALIFORNIA CODE OF REGULATIONS, TITLE 8, DIVISION 1, CHAPTER 4, SUBCHAPTER 6, ELEVATOR SAFETY DEVICES, IN ACCORDANCE WITH CFC 801.11(C)C, 302.2.
7. MEDICAL EMERGENCY ELEVATORS SHALL BE EQUIPPED WITH A KEY SWITCH TO RECALL THE ELEVATOR HOISTTOP TO THE MAIN FLOOR IN ACCORDANCE WITH CFC 3002.4-4.9
8. RECESSED REC TYPICAL WHERE NOTED ON PLAN; PROVIDE NOTTER ROOMER DATA 7200 SERIES, RECESSED STAINLESS STEEL #7240 W/ SLB. 2A10K UL-RATED EXTINGUISHES; SURFACE ALTA 7000 WHERE RECD
9. REFER TO LANDSCAPE PLANS FOR ALL HARDSCAPE AND SOFTSCAPE SCOPE OF WORK.

- 5. CARD READER, PER DOOR SCHEDULE
- 1-HR FIRE SEPARATION
- 2-HR FIRE SEPARATION

**LEGEND**



PROPOSED FIRST FLOOR PLAN  
SCALE: 1/8"=1'-0"

REVISION	BY
PC DELTA 1	MM
PC DELTA 2	MM
PC DELTA 3	AA
PC DELTA 4	AA

APPROVED

**CITY OF EL SEGUNDO**

Approval of these plans and specifications does not constitute a warranty or endorsement of any product, trade name, or manufacturer. It is the responsibility of the contractor to verify the accuracy of all information and to obtain all necessary permits from the appropriate authorities. The contractor shall be responsible for obtaining all necessary permits and for complying with all applicable laws, codes, and regulations. The contractor shall also be responsible for obtaining all necessary approvals from the appropriate authorities. The contractor shall be responsible for obtaining all necessary approvals from the appropriate authorities.

PROJECT NO. 2204 E IMPERIAL HIGHWAY  
 2204 E IMPERIAL HWY  
 EL SEGUNDO, CA 90245  
 PROJECT ARCHITECT: TISHI ARCHITECTS  
 10000 WILSON BLVD, SUITE 100  
 EL SEGUNDO, CA 90245  
 TEL: (310) 409-1111  
 WWW.TISHIARCHITECTS.COM

2204 East Imperial Highway  
 El Segundo, California 90245

PROPOSED FIRST FLOOR PLAN  
 LOS ANGELES TIMES GALLERY & ARCHIVE

**A200**

Date: 10/4/22  
 Scale: 1/8"=1'-0"  
 Drawn: AA/JJS  
 Appr: SBD/0500



PROJECT NO. 2204 E IMPERIAL HIGHWAY  
 2204 E IMPERIAL HWY  
 EL SEGUNDO, CA 90245  
 PROJECT ARCHITECT: TISHI ARCHITECTS  
 10000 WILSON BLVD, SUITE 100  
 EL SEGUNDO, CA 90245  
 TEL: (310) 409-1111  
 WWW.TISHIARCHITECTS.COM

APPROVED

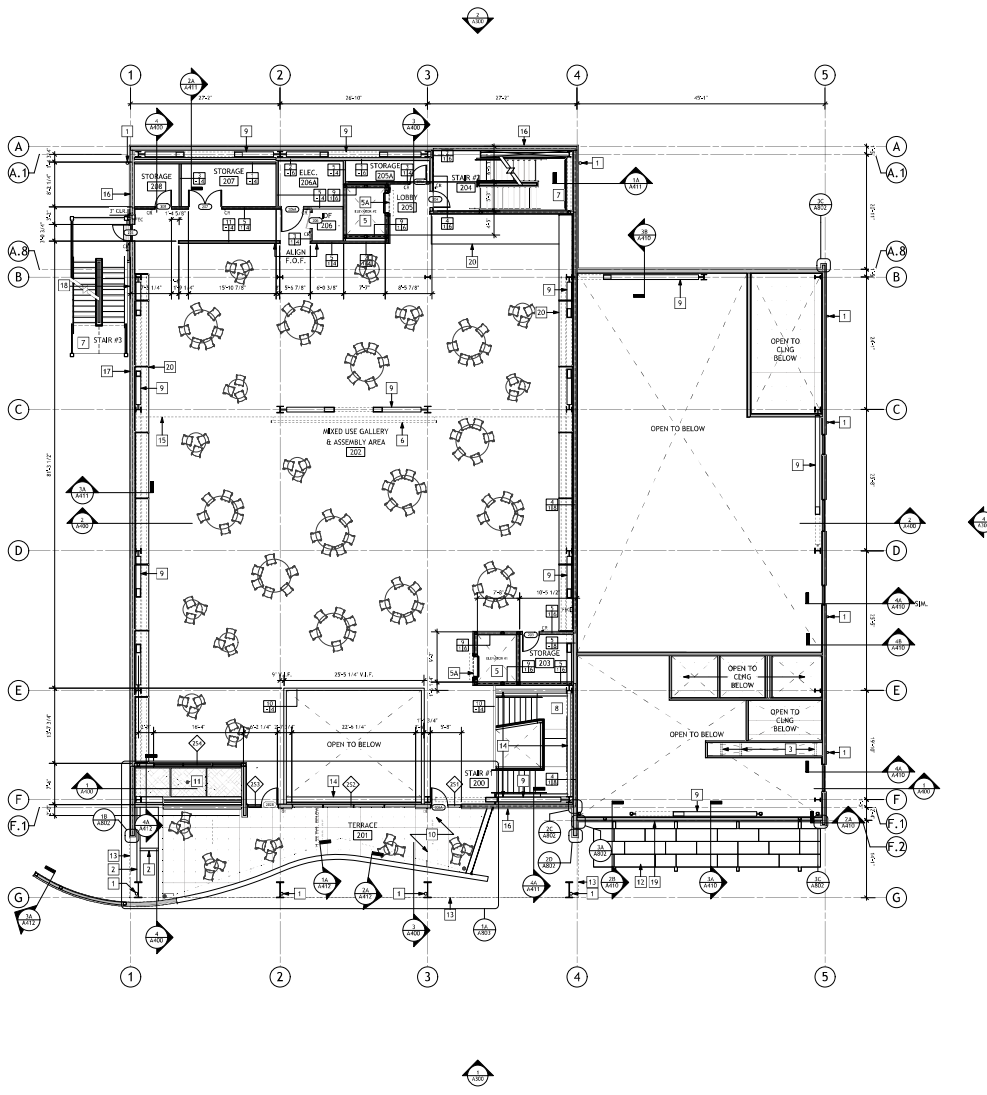
2204 East Imperial Highway  
 El Segundo, California 90245

PROPOSED FIRST FLOOR PLAN  
 LOS ANGELES TIMES GALLERY & ARCHIVE



Date: 10/4/22  
 Scale: 1/8"=1'-0"  
 Drawn: AA/JJS  
 Appr: SBD/0500

**A200**



### KEYNOTES

- 1 DOWNSPOUT
- 2 STEEL BEAM BELOW PER STRL. FINISH IN HIGH-PERFORMANCE PROTECTIVE METAL PAINT & PRIMER ON STEEL, TYP.
- 3 WALL FRAMING BELOW
- 4 (REMOVED)
- 5 NEW MEDICAL EMERGENCY SERVICE ELEVATOR SHAFT FOR METU-SHOP PASSENGER ELEVATORS. W/ DOOR SYSTEM INC. SMOKE CURTAIN (SC-540) (SEE C-1001) OR EQ. SEE A07A FOR TYP. ACCESSIBLE DETAILS, A610 FOR ENLARGED PLANS & SECTIONS
- 6 ELEVATOR SMOKE CURTAIN, DOOR SYSTEMS INC. (DS1-600 OR EQ. (ICC-ESR #4671); SEE 10/AB10
- 7 LED VIBRO WALL OVERHEAD, 30"x13" MAX. PROVIDED BY OTHERS; PROVIDE REGULAR BACKING ACROSS NOTES WIDTH & FULL HEIGHT OF SOFFIT WALL, VER. W/ STR.
- 8 EXIT STAIR 2 AND 3, SEE A801; BID ALTERNATE C5 (CONSTRUCTION SPECIALTIES) GROUP DRIFTREADY STAIR SYSTEM AND MODULAR STAIR SYSTEM RESPECTIVELY.
- 9 MAIN ATRIUM STAIR, SEE A600
- 10 BRACE FRAME PER STRL. BARRIER RAIL TO BE PROVIDED WHERE BRACE FRAME DOES NOT EXCEED 40" CLR. F. F. PER CBC11B-307
- 11 RAMP: ACRYLIC GLASS HANDRAILS, DIMENSION ADJUSTABLE FEDERAL SYSTEM O/TAPETED INSULATION OVER REINFORCED CONCRETE ON METAL DECK, SEE A803
- 12 (3) EQ. TOURNEROL FRP PLANTERS W/ IRRIGATION LINE, OBTAINED O/TAPETED INSULATION TO CENTRAL DRAIN AT SECOND FLOOR SLAB, SEE A803 AND A41A/B0
- 13 TUBE STEEL TRILLES W/ WORK MODERN ENFOLD SCREEN INTERSECTING PANELS; REFER TO STRL.
- 14 LINE OF BUILDING OVERHANG ABOVE
- 15 EDGE OF BEAM BELOW
- 16 LINE OF SOFFIT ABOVE
- 17 GFS WALL ASSEMBLY, MIN. 1-HR RATED PER UL DESIGN V497, TYP; SEE 2C/A801
- 18 KINGSPAN PANEL WALL ASSEMBLY, MIN. 1-HR RATED PER UL DESIGN V497, TYP; SEE 1C/A801
- 19 WALL ASSEMBLY TRANSITION, MIN. 1-HR RATED PER UL DESIGN V497, TYP; SEE 4C/A802
- 20 METU-SPAN PANEL WALL ASSEMBLY, SEE 2C/A801
- 21 NEW CUSTOM MILLWORK, COUNTERS AND DISPLAY CASES; SEE ALSO BUILDING SECTIONS & 3C/A511, TYP.

- ### GENERAL NOTES:
1. ALL DIMENSIONS ARE TO FACE OF STUD, U.N.O.
  2. SEE DOOR SCHEDULE, AND.
  3. SEE WINDOW SCHEDULE, AND.
  4. ALL A.S. FRAMED EXTERIOR WALLS RECEIVED (2) LAYERS OF GYP. BD. AT INTERIOR SIDE, TYP. PER PLAN.
  5. SEE WINDOW SCHEDULE, AND.
  6. AN ASSEMBLY LISTENING SYSTEM SHALL BE PROVIDED IN ASSEMBLY AREAS PER CBC 11B-27.2.
  7. RECESSED REC TYPICAL WHERE NOTED ON PLAN; PROVIDE POTTER BROMWER DANJA 7200 SERIES, RECESSED STAINLESS STEEL FRAME W/ 1/4" IN. ZINC PLATE UL-RATED EXTINGUISHER, SURFACE ALTA 7000 WHERE NOTED

**LEGEND**

CARD READER, PER DOOR SCHEDULE  
 1-HR FIRE SEPARATION

PROPOSED SECOND FLOOR PLAN  
 SCALE: 1/8"=1'-0"

REVISION	BY
PC DELTA 1	MM
11/20/22	AA
12/01/22	AA
1/22/24	AA

THE ARCHITECT HAS BEEN ADVISED BY THE CITY OF LOS ANGELES THAT THE CITY OF LOS ANGELES MAY REQUIRE THE ARCHITECT TO OBTAIN A PERMIT FROM THE CITY OF LOS ANGELES FOR THE CONSTRUCTION OF THE PROJECT. THE ARCHITECT IS NOT PROVIDING ANY GUARANTEE OR WARRANTY FOR THE PROJECT. THE ARCHITECT IS NOT PROVIDING ANY GUARANTEE OR WARRANTY FOR THE PROJECT. THE ARCHITECT IS NOT PROVIDING ANY GUARANTEE OR WARRANTY FOR THE PROJECT.

**THE ARCHITECT HAS BEEN ADVISED BY THE CITY OF LOS ANGELES THAT THE CITY OF LOS ANGELES MAY REQUIRE THE ARCHITECT TO OBTAIN A PERMIT FROM THE CITY OF LOS ANGELES FOR THE CONSTRUCTION OF THE PROJECT.**  
 PROJECT NO. 2204 E IMPERIAL HIGHWAY  
 PROJECT ADDRESS: 2204 E IMPERIAL HWY  
 PROJECT LOCATION: LOS ANGELES, CA 90024  
 PROJECT CONTACT: 310.408.1111

2204 East Imperial Highway  
 El Segundo, California 90245



Date: 10/4/22  
 Scale: 1/8"=1'-0"  
 Drawn: AA/JJS  
 Job: 9801.0500

A201

**CITY OF EL SEGUNDO**  
 APPROVED

Approval of this plan and specifications does not constitute a warranty or guarantee of accuracy, nor does it constitute a statement of opinion by the City of El Segundo. The City of El Segundo is not responsible for the accuracy of the information provided in this plan. The City of El Segundo is not responsible for the accuracy of the information provided in this plan. The City of El Segundo is not responsible for the accuracy of the information provided in this plan.

PROJECT NO. 2204 E IMPERIAL HIGHWAY  
 PROJECT ADDRESS: 2204 E IMPERIAL HWY  
 PROJECT LOCATION: LOS ANGELES, CA 90024  
 PROJECT CONTACT: 310.408.1111

**THE ARCHITECT HAS BEEN ADVISED BY THE CITY OF LOS ANGELES THAT THE CITY OF LOS ANGELES MAY REQUIRE THE ARCHITECT TO OBTAIN A PERMIT FROM THE CITY OF LOS ANGELES FOR THE CONSTRUCTION OF THE PROJECT.**

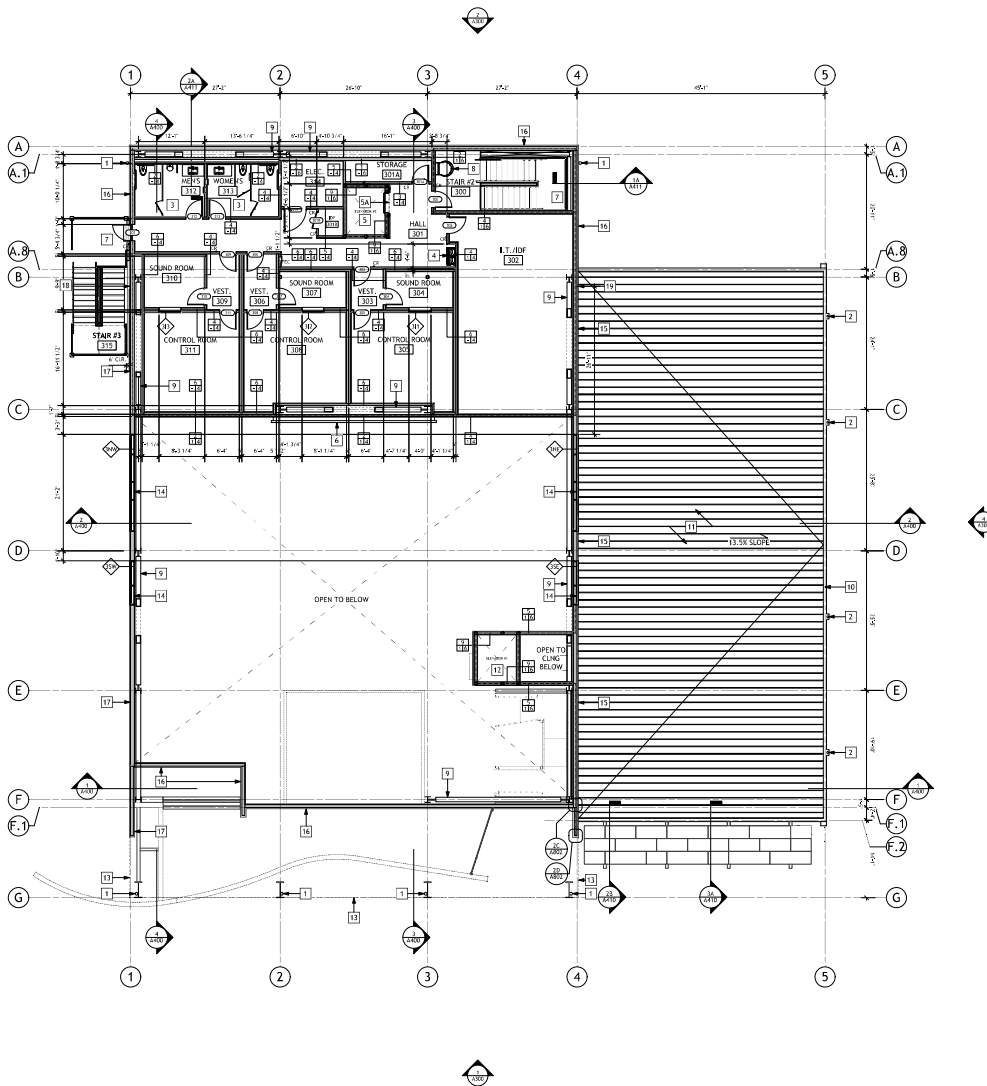
2204 East Imperial Highway  
 El Segundo, California 90245

PROPOSED SECOND FLOOR PLAN  
 LOS ANGELES TIMES GALLERY & ARCHIVE



Date: 10/4/22  
 Scale: 1/8"=1'-0"  
 Drawn: AA/JJS  
 Job: 9801.0500

A201





### KEYNOTES

- 1 DOWNSPOUT
- 2 DOWNSPOUT & SCUPPER
- 3 NEW ACCESSIBLE RESTROOM, SEE 1A/A008 & A012
- 4 NEW ACCESSIBLE URINAL WATER FOUNTAIN, #WREGGNTLEWISA, SEE 1A & 2D/A008
- 5 NEW MEDICAL EMERGENCY SERVICE ELEVATOR SHAFT FOR METRO/RTD PASSENGER ELEVATORS; SEE A007A FOR TYP. ACCESSIBLE DETAILS, AND FOR ENLARGED PLANS & SECTIONS
- 6A ELEVATOR SMOKE CURTAIN, DOOR SYSTEM INC. #DS1-600 OR EQ. #EC-45R #46711; SEE 1D/A810
- 6B LED VIDEO WALL OVERHEAD, 30'x13' MAX., PROVIDED BY OTHERS; PROVIDE REGULAR SAGGING ACCESS NOTED WIDTH & FULL HEIGHT OF SOFFIT WALL, VOK. W/ STRL.
- 7 EXIT STAIR 2 AND 3, SEE A011, A012 ALTERNATE (S CONSTRUCTION SPECIALTIES) GROUP OR FREESTAIR STAIR SYSTEM AND MODULAR STAIR SYSTEM RESPECTIVELY.
- 8 ALACO CAGED ROOF ACCESS LADDER #R06-C, OR SIMILAR
- 9 BRACE FRAM. PER STRL.
- 10 GUTTER, SEE 1C/A800
- 11 PROFILED METAL ROOF, SEE 2B/A800
- 12 1-HR RATED 2-LEVEL ELEVATOR SHAFT CONT'D TO ROOF DECK ABOVE
- 13 LINE OF BUILDING OVERHANG ABOVE
- 14 CLERESTORY GLAZING, AS SCHEDULED
- 15 METL-SPAN PANEL WALL ASSEMBLY, MIN. 1-HR RATED PER UL-149, TYP.; SEE 3C/A801
- 16 SF'S WALL ASSEMBLY, MIN. 1-HR RATED PER V497/UL263, TYP.; SEE 3C/A801
- 17 KINGSPAN PANEL WALL ASSEMBLY, MIN. 1-HR RATED PER UL DESIGN V497, TYP.; SEE 1C/A801
- 18 WALL ASSEMBLY TRANSITION, MIN. 1-HR RATED PER UL DESIGN V497, TYP.; SEE 4C/A802
- 19 WALL ASSEMBLY TRANSITION, MIN. 1-HR RATED PER UL DESIGN V497, TYP.; SEE 4B/A802

### GENERAL NOTES:

1. ALL DIMENSIONS ARE TO FACE OF FRAMING, U.N.C.
2. SEE DOOR SCHEDULE, AND.
3. SEE WINDOW SCHEDULE, AND.
4. ALL A.S. FRAMED EXTERIOR WALLS RECEIVED (2) LAYERS OF GYP. BD. AT INTERIOR SIDE, TYP. PER PLAN.
5. SEE WINDOW SCHEDULE, AND.
6. RECESSED TYPICAL WHERE NOTED ON PLAN; PROVIDE NOTTER ROMBER DANA 7200 SERIES, RECESSED STAINLESS STEEL #7260 W/ 3/8" DIA. 2X10RC UL-RATED EXTINGUISHER, SURFACE ALTA 7000 WHERE REQ'D

 CARD READER, PER DOOR SCHEDULE  
 1-HR FIRE SEPARATION

### LEGEND



REVISION	BY
PC DELTA 1	MM
11/20/22	AA
11/20/22	AA
11/22/24	AA

THE ABOVE DRAWING IS THE PROPERTY OF THE ARCHITECT. IT IS TO BE USED ONLY FOR THE PROJECT AND SITE SPECIFICALLY IDENTIFIED HEREIN. IT IS NOT TO BE REPRODUCED, COPIED, OR TRANSMITTED IN ANY FORM OR BY ANY MEANS, ELECTRONIC OR MECHANICAL, INCLUDING PHOTOCOPYING, RECORDING, OR BY ANY INFORMATION STORAGE AND RETRIEVAL SYSTEM, WITHOUT THE WRITTEN PERMISSION OF THE ARCHITECT.

**TOCHIO & TOCHIO ARCHITECTS**  
 REGISTERED ARCHITECTS  
 2704 East Imperial Highway  
 El Segundo, California 90245  
 TEL: 310.316.1100 FAX: 310.316.1101

**PROPOSED THIRD FLOOR PLAN**  
 LOS ANGELES TIMES GALLERY & ARCHIVE

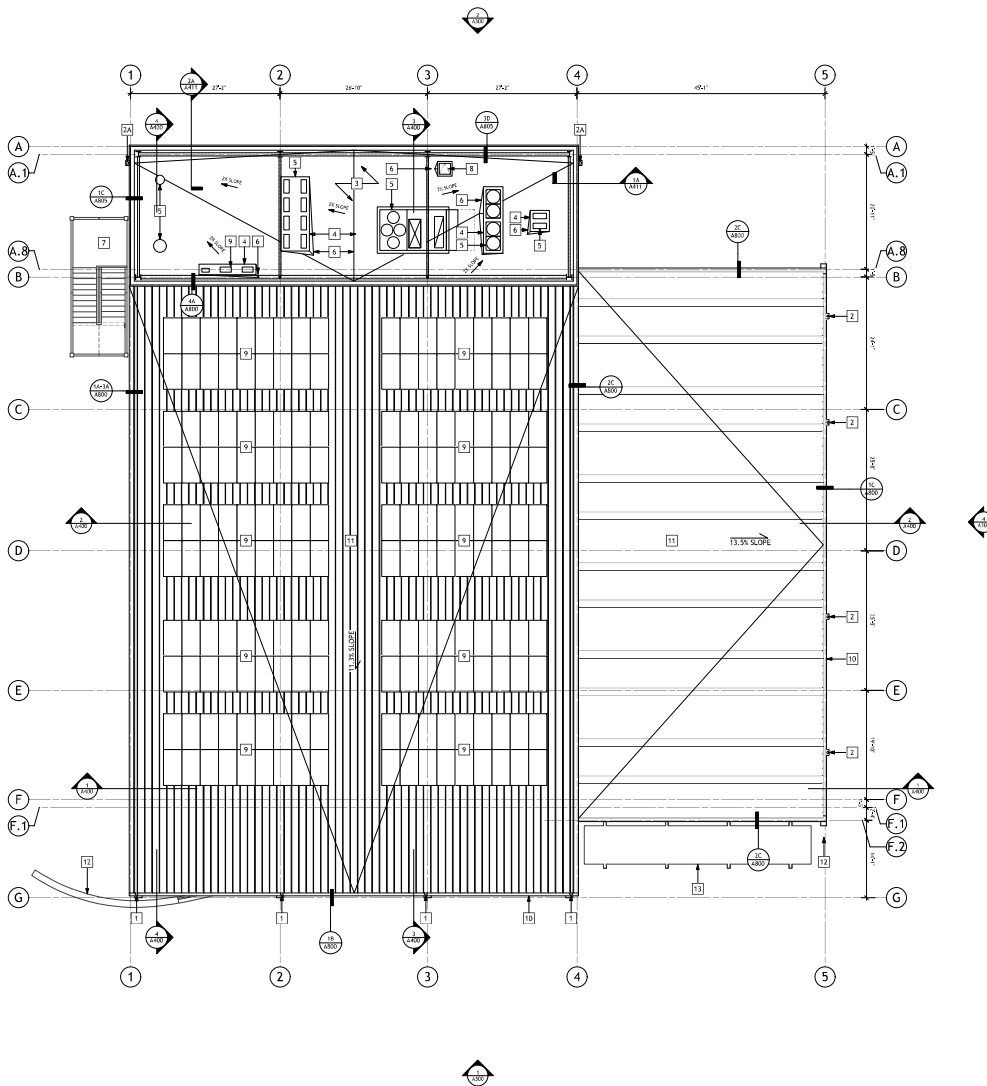


Date: 10/4/22  
 Scale: 1/8"=1'-0"  
 Drawn: AA/JJS  
 Job: 9801.0500

**A202**

**CITY OF EL SEGUNDO**  
 APPROVED  
 Approval of this plan and specifications does not constitute an endorsement or approval of any product, material, or equipment. The City of El Segundo is not responsible for any errors or omissions in this plan. The City of El Segundo is not responsible for any construction or other work not shown on this plan. The City of El Segundo is not responsible for any construction or other work not shown on this plan.

PROJECT NO. 2204-EL SEGUNDO  
 Project Address: 2704 EAST IMPERIAL HWY  
 Permitting: TP  
 Fire Department: VES  
 Building Department: VES  
 City Clerk:



### KEYNOTES

- 1 DOWNSPOUT
- 2 DOWNSPOUT & SCUPPER
- 2A DOWNSPOUT & SCUPPER AT MECHANICAL DECK, SEE 1A/ABDS
- 3 MECHANICAL DECK, SEE 1B, 1D/ABDS
- 4 EQUIPMENT PAD PER STEEL
- 5 NEW EQUIPMENT PER MECHANICAL
- 6 CHICKET AS REQD
- 7 THREE-STORY STAIR #3 BELOW; NO ROOF ACCESS
- 8 ACCESS HATCH
- 9 NEW EQUIPMENT PER SOLAR, UNDER DEFERRED SUBMITTAL
- 10 GUTTER, SEE 1B-1C/ABDD
- 11 STANDING SEAM ROOF, SEE DETAIL 2B/ABDD
- 12 T.O. TWO-STORY WALL BELOW
- 13 EDGE IF FIRST FLOOR CANOPY BELOW

GENERAL NOTES:  
1. N/A

REVISION	BY
PC 08/24/21	MM
17/07/23	AA
17/07/23	AA
17/22/24	AA

THE ABOVE PROPOSED ROOF PLAN IS THE PROPERTY OF TORCHIO & TORCHIO ARCHITECTS. IT IS TO BE USED ONLY FOR THE PROJECT AND SITE SPECIFICALLY IDENTIFIED HEREIN. ANY REUSE OR MODIFICATION OF THIS PLAN WITHOUT THE WRITTEN CONSENT OF TORCHIO & TORCHIO ARCHITECTS IS STRICTLY PROHIBITED. THE USER ASSUMES ALL LIABILITY FOR ANY DAMAGE OR INJURY RESULTING FROM THE USE OF THIS PLAN.

**TORCHIO & TORCHIO ARCHITECTS**  
 REGISTERED ARCHITECTS  
 2204 East Imperial Highway  
 El Segundo, California 90245  
 TEL: 310.414.1111 FAX: 310.414.1112

**PROPOSED ROOF PLAN**  
 LOS ANGELES TIMES GALLERY & ARCHIVE

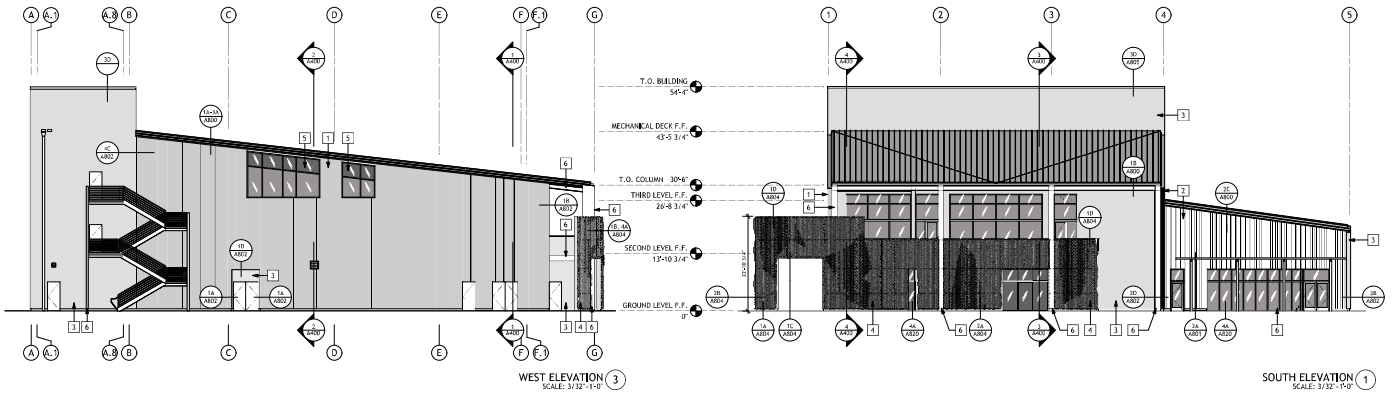
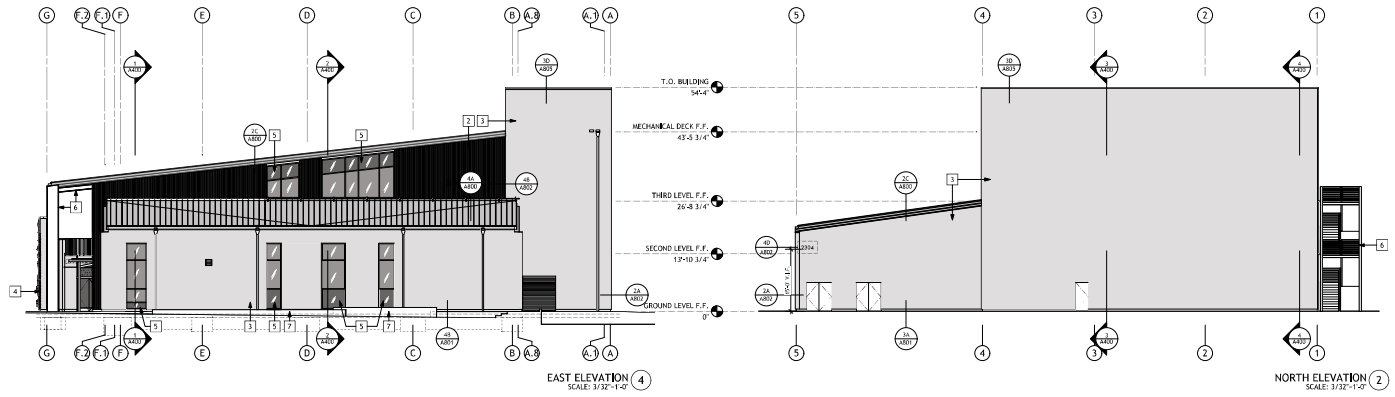
Date: 10/4/22  
 Scale: 1/8"=1'-0"  
 Drawn: AA/JJS  
 Job: 9801.0500



**A203**

**CITY OF EL SEGUNDO**  
 APPROVED

Approval of this plan and specifications does not constitute a warranty or endorsement of any product, material, or equipment. The City of El Segundo is not responsible for any damage or injury resulting from the use of this plan. The user assumes all liability for any damage or injury resulting from the use of this plan.



**KEYNOTES**

- 1 KINGSPAN KS SERIES WALL PANELS, SEE 1A-1D/AB1
- 2 METL-SPAN 7.2 INSUL-48B WALL PANELS, SEE 2A-2D/AB1
- 3 STOTHERN CI XPS EPS, SEE 3A-3D/AB1
- 4 STOTHERN CI XPS EPS BELOW SURFACE-MOUNTED TRELLIS SYSTEM, SEE 4A-4B/AB04
- 5 SPANREL PANEL SCHEDULED GLAZING W/ADDED OPAQUE PROTECTIVE FILM (BNT)
- 6 HIGH-PERFORMANCE PROTECTIVE METAL PAINT B PRIMER D STEEL, TYP.
- 7 SOFTSCAPE LOW RETAINING WALL, REFER TO CIVIL & LANDSCAPE

REVISION	BY
1	PC DELTA 1
2	PC DELTA 2
3	PC DELTA 3
4	PC DELTA 4

**TORCHIO & THOMP ARCHITECTS**  
 REGISTERED ARCHITECTS IN THE STATE OF CALIFORNIA  
 2204 EAST IMPERIAL HIGHWAY  
 EL SEGUNDO, CALIFORNIA 90245  
 TEL: 310.414.1111 FAX: 310.414.1112

**BUILDING ELEVATIONS**  
 LOS ANGELES TIMES GALLERY & ARCHIVE



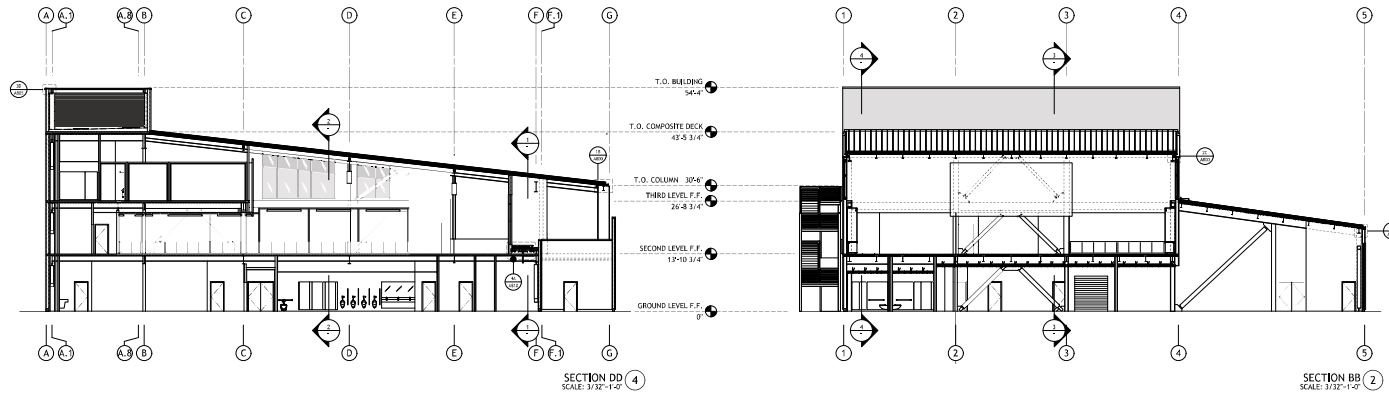
Date: 10/4/22  
 Scale: 3/32"=1'-0"  
 Drawn: AA/JJS  
 Job: 9801.0500

**A300**

**CITY OF EL SEGUNDO**  
 APPROVAL

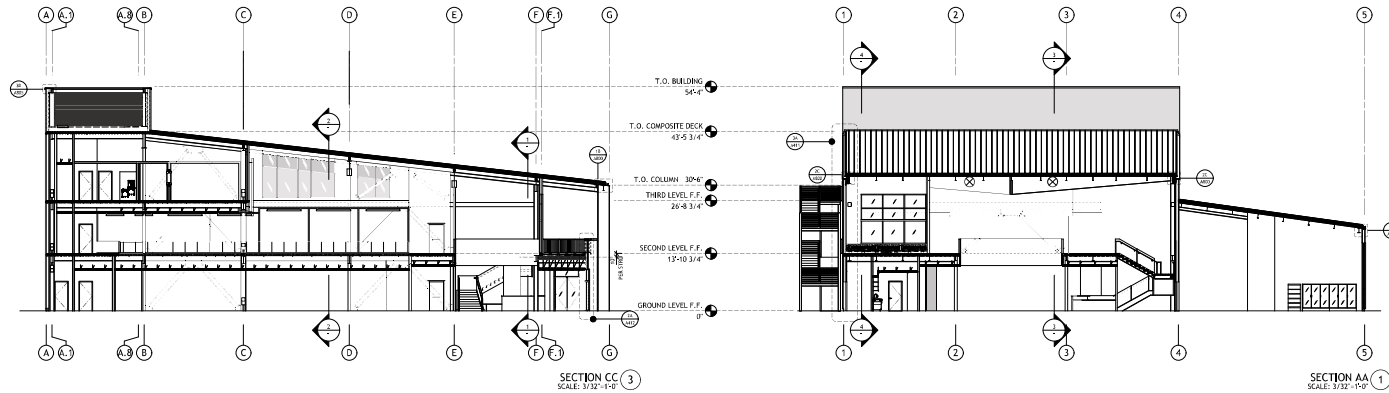
Approval of these plans and specifications does not constitute an endorsement or approval of any product, material, or construction method by the City of El Segundo. The City of El Segundo is not responsible for any errors or omissions in these plans and specifications. The City of El Segundo is not responsible for any construction or installation of any product, material, or construction method by the contractor. The City of El Segundo is not responsible for any damage to property or persons resulting from the use of these plans and specifications.

Project No.: 050413-0000-0000  
 Project Name: 2204 EAST IMPERIAL HWY  
 Permit No.: 19  
 Fire Inspection Fee: \$15  
 Building Inspection Fee: \$15  
 City Seal: 10/15/22



SECTION DD  
SCALE: 3/32"=1'-0"

SECTION BB  
SCALE: 3/32"=1'-0"



SECTION CC  
SCALE: 3/32"=1'-0"

SECTION AA  
SCALE: 3/32"=1'-0"

REVISION	BY
PC DELTA 1	MM
17-07-23	AA
PC DELTA 2	AA
17-07-23	AA
PC DELTA 3	AA
17-07-24	AA

The above drawings were prepared by the architect and are subject to the approval of the City of El Segundo. The architect is not responsible for the accuracy of the information provided by the client or for the accuracy of the information provided by the City of El Segundo.

**TORONDO & THOMP ARCHITECTS**  
REGISTERED ARCHITECTS IN THE STATE OF CALIFORNIA  
1000 WEST 10TH AVENUE, SUITE 100  
DENVER, COLORADO 80202  
TEL: 303.733.1100  
WWW.TORONDOANDTHOMP.COM

2204 East Imperial Highway  
El Segundo, California 90245

**BUILDING SECTIONS**  
LOS ANGELES TIMES GALLERY & ARCHIVE



Date: 10/4/22  
Scale: 3/32"=1'-0"  
Drawn: AA/JJS  
Job: 9801.0500

**A400**

**CITY OF EL SEGUNDO**  
APPROVED

Approval of these plans and specifications does not constitute a warranty or endorsement of any product, material, or construction method. The City of El Segundo is not responsible for the accuracy of the information provided by the client or for the accuracy of the information provided by the City of El Segundo. The City of El Segundo is not responsible for the accuracy of the information provided by the client or for the accuracy of the information provided by the City of El Segundo.

**PROJECT NO. 2204 EAST IMPERIAL HWY**  
Floor Elevation: 10'  
Fire Elevation: 26'-8 3/4"  
Building Elevation: 54'-4"  
City of El Segundo