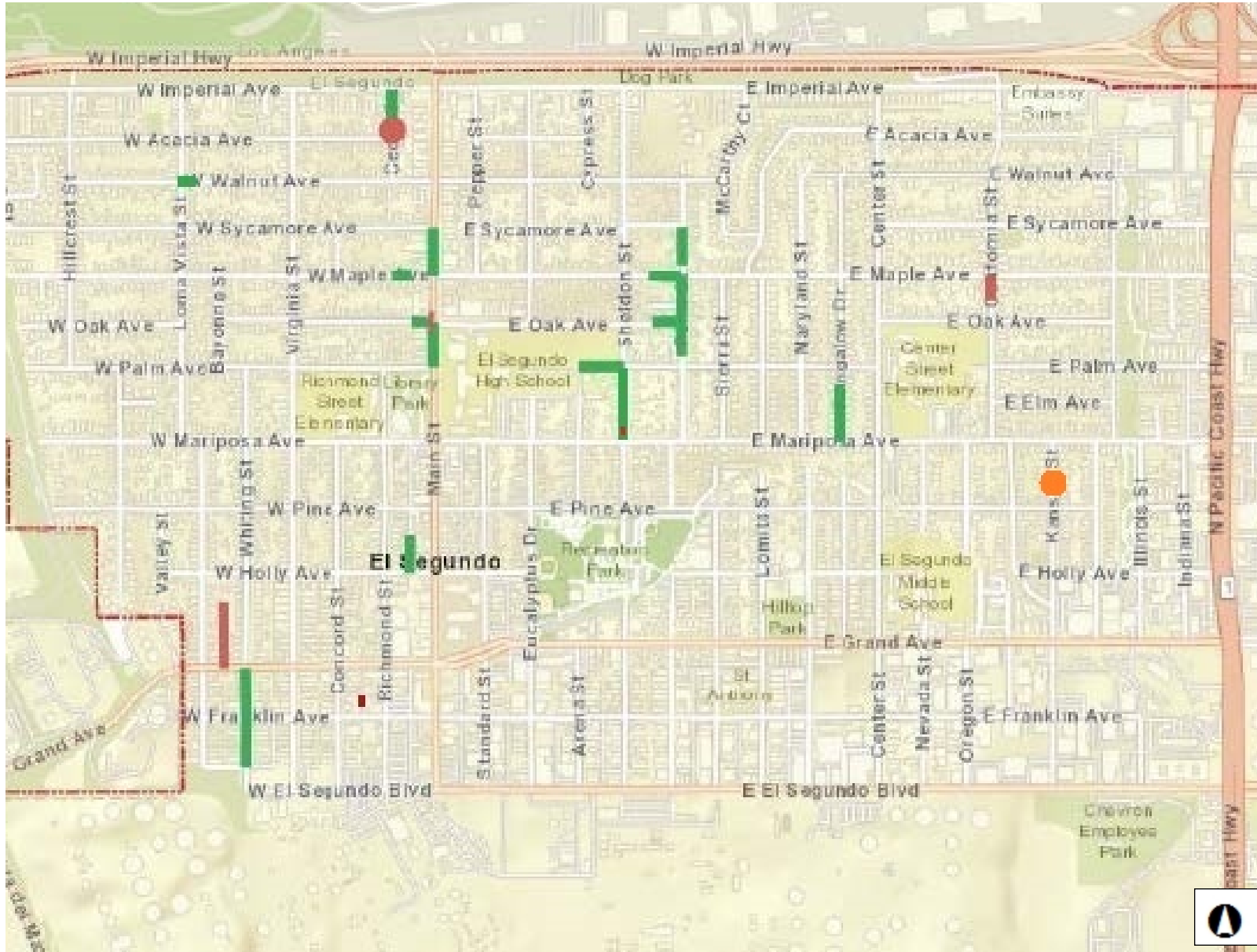




# Location Map

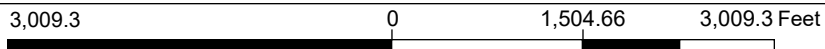
## PW 23-08: Wastewater Infrastructure Improvements Project



**Legend**

- - - City Boundary
- █ Sewer Pipe Lining
- █ Open-Trench Sewer Pipe Removal and Replacement
- Terminal Cleanout Structure Installation
- 513 Kansas St. Storm Drain Entire Manhole Removal and Replacement

**Notes**



WGS\_1984\_Web\_Mercator\_Auxiliary\_Sphere

*DISCLAIMER: The information shown on this map was compiled from different GIS sources. The land base and facility information on this map is for display purposes only and should not be relied upon without independent verification as to its accuracy. The City of El Segundo will not be held responsible for any claims, losses or damages resulting from the use of this map.*